



Crew Resource Management Information Processing

Information Processing

- Sensory Receptors and Sensory Stores
- Attention and Perception
- Decision Making
- Memory
- Motor Programs
- Situation Awareness

Information Processing Limitations

- Attention and Perception
- Decision Making, Memory, and Motor Programs

Information Processing

- **Sensory Receptors and Sensory Stores**
- Attention and Perception
- Decision Making
- Memory
- Motor Programs
- Situation Awareness

Information Processing Limitations

- Attention and Perception
- Decision Making, Memory, and Motor Programs

Information Processing

- Sensory Receptors and Sensory Stores
- **Attention and Perception**
- Decision Making
- Memory
- Motor Programs
- Situation Awareness

Information Processing Limitations

- Attention and Perception
- Decision Making, Memory, and Motor Programs

Information Processing

- Sensory Receptors and Sensory Stores
- **Attention and Perception**
- **Decision Making**
- Memory
- Motor Programs
- Situation Awareness

Information Processing Limitations

- Attention and Perception
- Decision Making, Memory, and Motor Programs

Information Processing

- Sensory Receptors and Sensory Stores
- **Attention and Perception**
- **Decision Making**
- **Memory**
- Motor Programs
- Situation Awareness

Information Processing Limitations

- Attention and Perception
- Decision Making, Memory, and Motor Programs

Information Processing

- Sensory Receptors and Sensory Stores
- **Attention and Perception**
- **Decision Making**
- **Memory**
- **Motor Programs**
- Situation Awareness

Information Processing Limitations

- Attention and Perception
- Decision Making, Memory, and Motor Programs

Information Processing

- Sensory Receptors and Sensory Stores
- **Attention and Perception**
- **Decision Making**
- **Memory**
- **Motor Programs**
- **Situation Awareness**

Information Processing Limitations

- Attention and Perception
- Decision Making, Memory, and Motor Programs

Information Processing

- Sensory Receptors and Sensory Stores
- **Attention and Perception**
- **Decision Making**
- **Memory**
- **Motor Programs**
- **Situation Awareness**

Information Processing Limitations

- Attention and Perception
- Decision Making, Memory, and Motor Programs

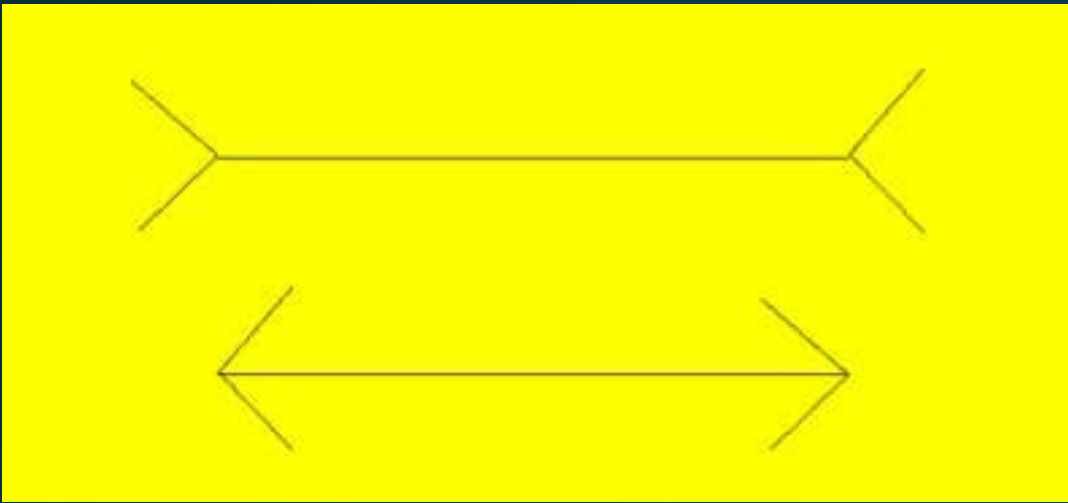
Information Processing

- Sensory Receptors and Sensory Stores
- **Attention and Perception**
- **Decision Making**
- **Memory**
- **Motor Programs**
- **Situation Awareness**

Information Processing Limitations

- **Attention and Perception**
- Decision Making, Memory, and Motor Programs

Perception & Misperception



- Length of the horizontal lines appears to be different when in reality they are the same.

Perception & Misperception

A, B, C, D, E, F
10, 11, 12, 13, 14

- Is "B" the letter "B" or is it 13?

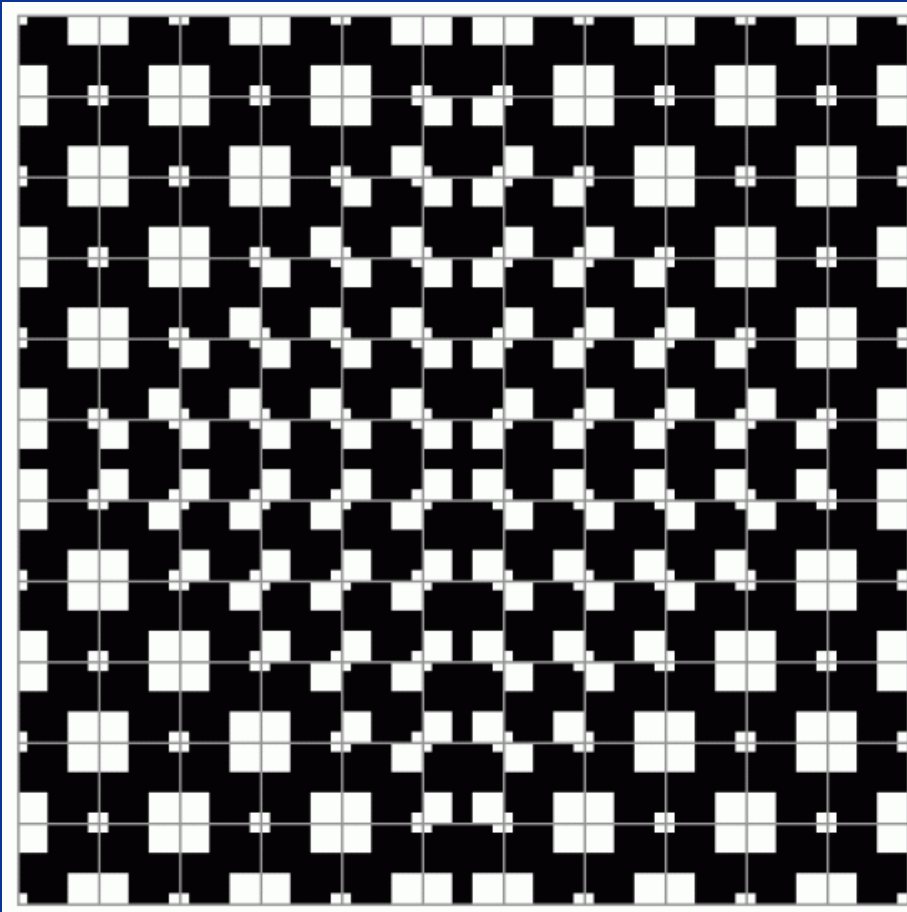
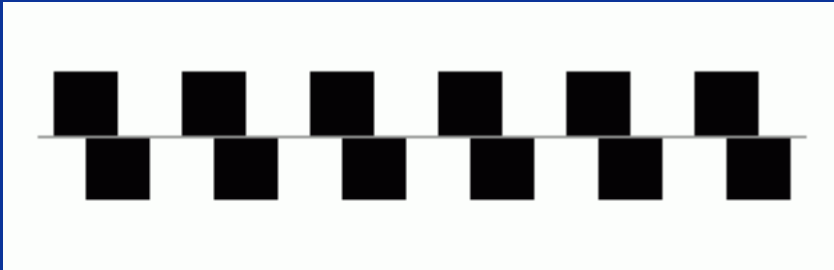
Context

Perception & Misperception



- What does the sign say?

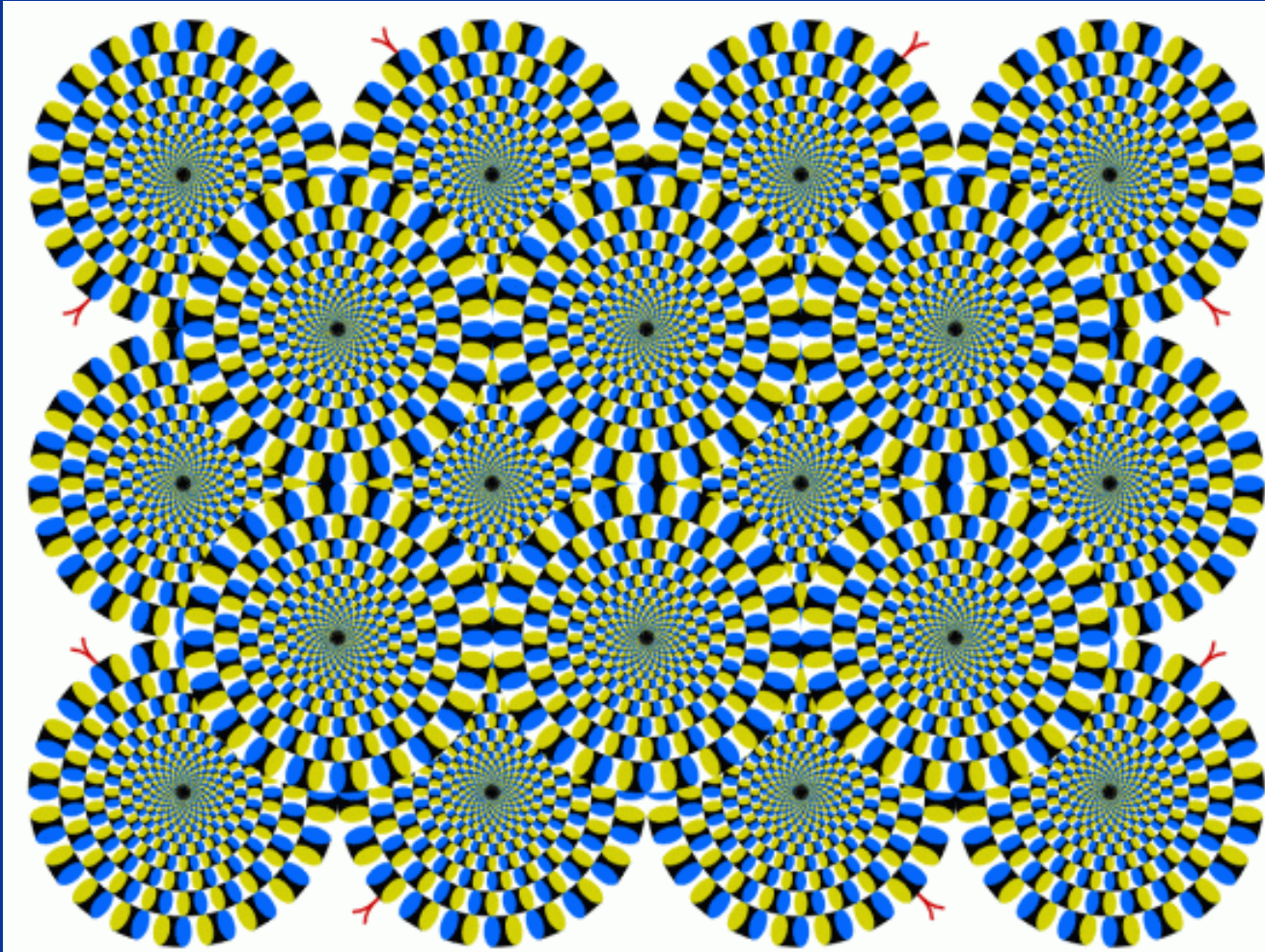
Expectations



Perception & Misperception

- Is the horizontal line flat or does it slope?
- Are the vertical and horizontal lines distorted?

Perception & Misperception



- Are the circles moving?

Information Processing

- Sensory Receptors and Sensory Stores
- **Attention and Perception**
- **Decision Making**
- **Memory**
- **Motor Programs**
- **Situation Awareness**

Information Processing Limitations

- **Attention and Perception**
- **Decision Making, Memory, and Motor Programs**