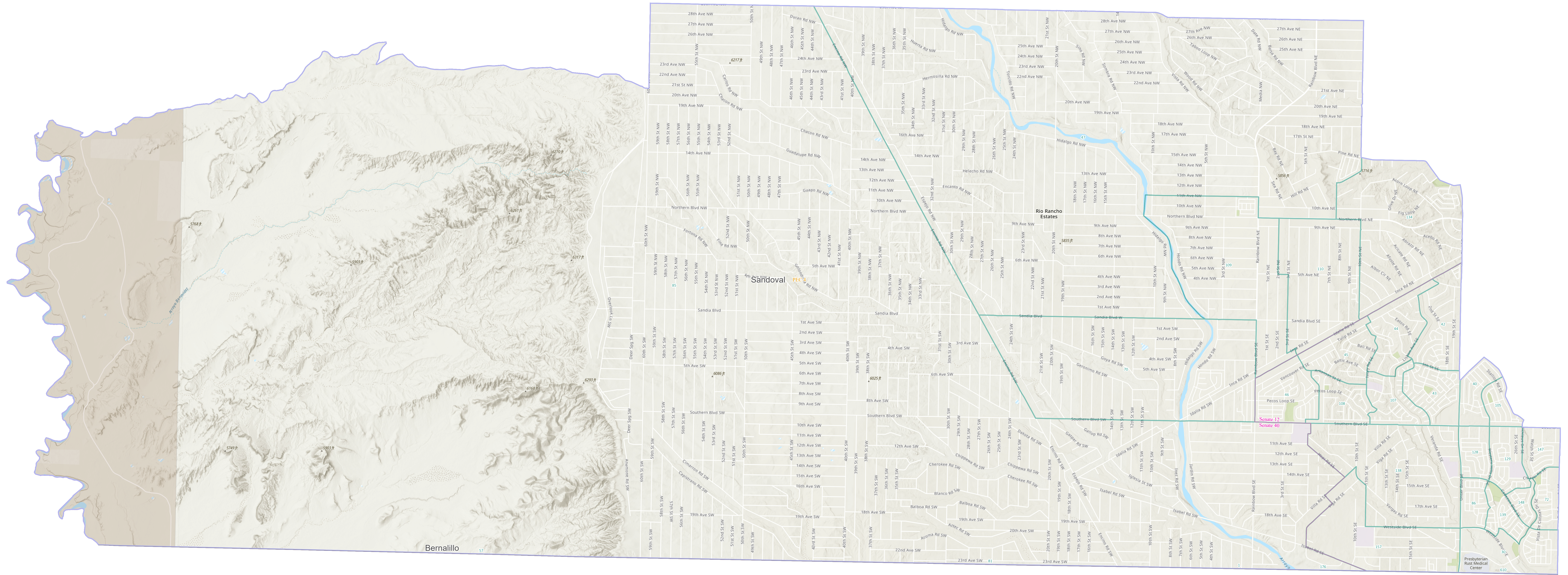


# NM State Representative District 60



- State Representative District
- Voting Precinct
- Federal Congressional District
- State Senate District
- Public Education Commission District (PEC)
- Tribal Land Boundary
- County Boundary

**Map Produced By**  
Earth Data Analysis Center, The University of New Mexico  
February 2022

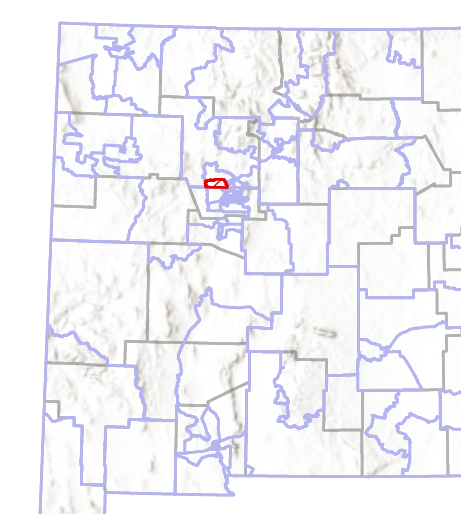
**Data Sources:** New Mexico Legislature, Research & Polling, Inc., US Census Bureau, Resource Geographic Information System (RGIS);  
**Base map:** "World Topographic Map" and "World Hillshade", by Esri, NASA, NGA, USGS, New Mexico State University, Texas Parks & Wildlife, HERE, Garmin, SafeGraph, METI/NASA, Bureau of Land Management, EPA, NPS, USDA



0 0.42 0.85 1.7 2.55 3.4  
Kilometers

0 0.35 0.7 1.4 2.1 2.8  
Miles

**Spatial Reference**  
**Name:** NAD 1983 UTM Zone 13N  
**PCS:** NAD 1983 UTM Zone 13N  
**GCS:** GCS North American 1983  
**Datum:** North American 1983  
**Projection:** Transverse Mercator  
**Scale:** 1:26,000



This map was created by the Earth Data Analysis Center, The University of New Mexico, as contracted by the State of New Mexico, Secretary of State's Office (NMSO). The purpose of this map is to display geographic boundaries resulting from the redistricting process carried out in the State of New Mexico in 2021. It shows the following geospatial data: Federal Congressional Districts, State Senate Districts, State Representative Districts, Voting Precincts, Public Education Commission Districts (PEC), County boundaries, and Tribal Land boundaries. Esri's "Topographic" base map serves as background, providing a view of topographic features including mountains, rivers/streams, and major roads with labels.

**Disclaimer:** The data in this map is believed to be accurate and current. The map is provided "AS-IS", without warranties of any kind, either expressed or implied. The Earth Data Analysis Center, The University of New Mexico assumes no legal liability or responsibility for the accuracy, completeness, or usefulness of the map, or for consequential and indirect damages arising from its use.