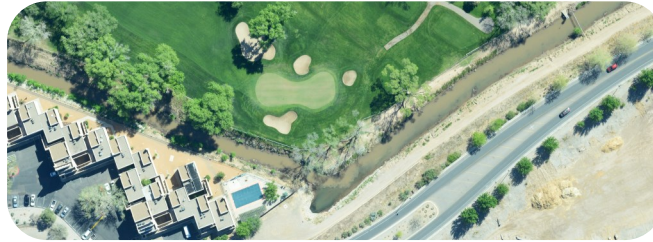


About Us

Earth Data Analysis Center (EDAC) was established at the University of New Mexico (UNM) in 1964 to transfer NASA space-based technology to the private and public sectors. As geospatial technology has developed, EDAC has adapted and grown to stay on top of the changing technological landscape.

EDAC is a center for interdisciplinary geospatial science and research. EDAC is well known among Federal agencies; state, local and tribal governments; professional societies, organizations; and advisory bodies nationally and internationally.

EDAC's staff come from a variety of academic disciplines including Geography, Anthropology, Engineering, and Geology, and have developed skills in working across disciplinary boundaries with a wide variety of collaborating project partners and end-user communities.



Center for Geospatial & Information Technology Services

FIND US

Online at: edac.unm.edu



@nrmgis



EarthDataAnalysisCenter

Tel: 505-277-3622

Physical Address:

400 University Blvd NE
Building #16
Albuquerque, NM 87131

Campus Mail Stop Code:

MSC01 1110
1 University of New Mexico



RGIS Data Clearinghouse

EDAC's RGIS Program was designated as the state digital geospatial data clearinghouse by the New Mexico Legislature in 2013. RGIS provides an interactive mapping tool to search and download a wide variety of geospatial data.

RGIS is a comprehensive GIS resource for state and local governments, educational institutions, nonprofit organizations, and private businesses; promoting geospatial information and GIS technology as primary analytical tools for decision makers and researchers; and providing a central clearinghouse to avoid duplication and improve information transfer efficiency.

IMAGE ARCHIVE

EDAC's Image Archive team provides users with data and metadata for a wide variety of geospatial products, including aerial photography dating from the 1930's, space shuttle imagery, satellite imagery, topographic maps and digital data. Under agreement with the U.S. Geological Survey, the Clearinghouse also operates as New Mexico's Natural Science Network and is a USGS Business Partner.

Products and Services

GIS PROJECTS

Our GIS Team is comprised of experienced geospatial experts, including a licensed drone pilot. EDAC offers custom products and services using GIS, including Internet and desktop mapping application development; spatial data acquisition and processing; spatial modeling and analysis; and digital and hardcopy map products.

EDAC GIS projects are deployed across a range of applications, including land use, natural resources management, public health, urban landscapes, risk assessment, and utilities. EDAC also hosts and operates the websites NMflood and NMWatch, which include up-to-date information about current flood and fire conditions, respectively.

IMAGE PROCESSING PRODUCTS

Our Image Processing Team offers services in processing and analyzing remotely acquired LiDAR, aerial, and satellite data in support of a wide range of application areas including crop inventory, natural resource management, and border conflict resolution.

Outreach Events

GIS DAY

EDAC has been a partner in hosting GIS Day on the UNM campus since 2013. This annual event brings together a range of geospatial practitioners from around the state and region to raise awareness of GIS and geospatial technology on campus.

EARTH SCIENCE DAY

Earth Science Day is an annual event held at the New Mexico Capitol Building in Santa Fe. The purpose of this event is to highlight the importance of geoscientific work in New Mexico. EDAC has participated in Earth Science Day since 2005.

