

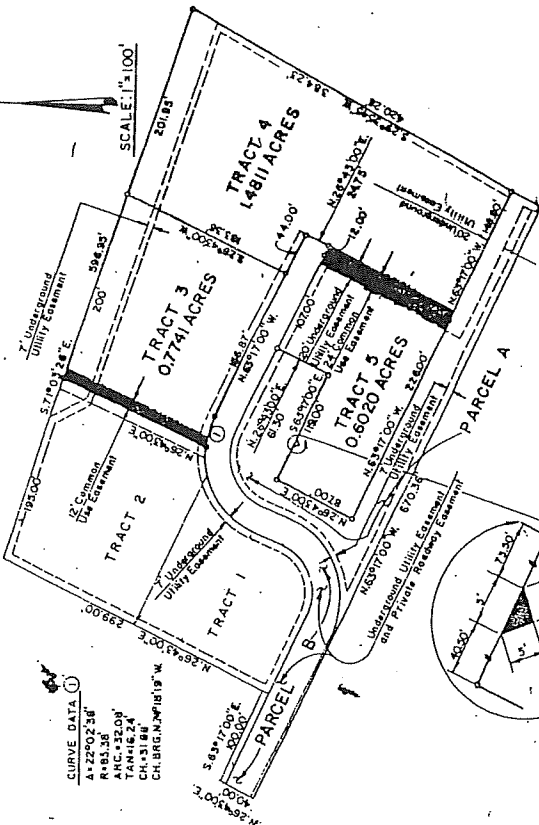
B19-80

78 1860

TRACTS 3, 4 AND 5, PARCEL A
SANDIA MEDICAL PARK

NOTE: TRACTS 1 & 2 PREVIOUSLY
FILED DEC 20, 1977

State of New Mexico
County of Bernalillo
I, John Cooper, Surveyor,
do hereby certify that the
above plat was filed for record on
FEB 27 1978
at 10:00 AM in the County Clerk's
Office at Santa Fe, New Mexico.



DESCRIPTION

A certain tract or parcels of land being located in Parcel A of the Sandia Medical Park (hereinafter as filed with the Bernalillo County Clerk on December 12, 1977, and more particularly being described as follows:

Beginning at a point on the north line of said Parcel A, Sandia Medical Park, from whence the northwest corner bears N 71° 03' 26"W, a distance 195.00'; thence, S 71° 03' 26"W, along said north line, a distance 401.93' to the northeast corner of said parcel; thence,

S 29° 35' 45"W, along the east line of said parcel, a distance 384.23'; thence, N 63° 17' 00"W, a distance 374.80'; thence,

N 26° 43' 00"W, a distance 87.00'; thence, S 63° 17' 00"W, a distance 119.00'; thence,

N 27° 43' 00"W, a distance 41.30' to a point on the south line of Parcel B; thence, S 63° 17' 00"W, along said south line, a distance 119.00' to the southeast corner of Parcel B; thence,

N 26° 43' 00"W, along the east line of said Parcel B, a distance 24.75' to the northeast corner of Parcel B; thence, N 63° 17' 00"W, along the north line of Parcel B, a distance 210.87' to a point on a curve; thence,

Along the north line of Parcel B, along a curve to the left (said curve having a radius of 83.38', a central angle of 23° 01' 38" and a chord bearing N 74° 18' 19"W, a distance 31.68') a distance 32.08'; thence,

N 26° 43' 00"W, a distance 162.43' to the point of beginning and containing 2.8572 acres more or less.

BASIS OF BEARING: SANDIA MEDICAL PARK, FILED JULY 11, 1977.

The subdivision of the land herein described is with free consent and in accordance with the desires of the undesignated owner and proprietor thereof, and said owner and proprietor does hereby dedicate any public rights-of-way shown on this plat. Power and communication easements are reserved where lines and 10 feet in width centered on the side lot lines, except as noted, including the right of ingress and egress and the right to trim interfering trees. Any drainage easements shown hereon are also easements for underground sewer and water lines.

SANDIA FOUNDATION

Approval and filing with the County Clerk of Bernalillo County of this plat does not vest or in any way effect public or private easements.

Property Management
STATE OF NEW MEXICO
COUNTY OF BERNALILLO

A. K. Kelley 2-27-78

On this 27th day of February, 1978, the foregoing instrument was acknowledged before me by A. K. Kelley, My Commission Expires: 12-12-78

GORDON HERGENROTTER & ASSOCIATES, INC.
322 Eighth Street, N.W.
Albuquerque, New Mexico 87102
(505) 247-0264
Date JAN 1978 Drawing No. 1978-108
Page 1

CERTIFICATE

I, John Cooper, under the laws of the State of New Mexico, certify that I am a registered Professional Engineer and Land Surveyor, and that this plat was prepared by me or under my supervision, shows all easements of record, meets the minimum requirements for monumentation and surveys of the Albuquerque Subdivision Ordinance, and is true and accurate to the best of my knowledge.

John Cooper Jan 18, 1978
MCE



John Cooper
2-27-78 1-15
5P-7B-108