

A.L.T.A./A.C.S.M. LAND TITLE SURVEY
 PARCEL IX - TRACT R-1-B, LANDS OF SOUTHWESTERN CONSTRUCTION COMPANY
 SECTION 16, T. 10 N., R. 3 E., N.M.P.M.
 CITY OF ALBUQUERQUE, BERNALILLO COUNTY, NEW MEXICO
 JANUARY 2000 / AMENDED MARCH 2001
 SHEET 4 OF 4

SYMBOLS LEGEND

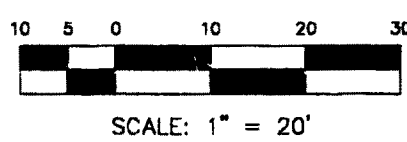
- ☆ = LIGHT POLE
- OH- = OVERHEAD UTILITY LINE
- UT- = UNDERGROUND TELEPHONE LINE
- UE- = UNDERGROUND ELECTRIC LINE
- GAS- = UNDERGROUND GAS LINE
- SEWER- = UNDERGROUND SEWER LINE
- WATER- = UNDERGROUND WATER LINE
- ⊙ = SEWER MANHOLE
- = WATER METER
- ⊕ = WATER VALVE
- = SEWER CLEANOUT
- ◀ = SPRINKLER CONTROL VALVE
- ⊞ = TRANSFORMER
- ▩ = DUMPSTER
- = TELEPHONE RISER
- = TELEPHONE SERVICE BOX
- ⊕ = FIRE HYDRANT
- ⊞ = DROP INLET
- = BLOCK WALL
- = TRAFFIC FLOW
- CMP = CORRUGATED PIPE

MONUMENT LEGEND

- △ - FOUND CONTROL STATION AS NOTED
- - FOUND MONUMENT AS NOTED
- - SET 1/2" REBAR W/ YELLOW PLASTIC CAP STAMPED "PATRICK PS 12651" OR SET PK NAIL WITH BRASS TAG STAMPED "PS 12651" OR SET "X" IN CONCRETE

PARKING DATA

- OPEN PARKING**
- 1 HANDICAP PARKING SPACES
- 46 STANDARD PARKING SPACES
- COVERED/UNDERGROUND PARKING**
- 1 HANDICAP PARKING SPACES
- 34 STANDARD PARKING SPACES
- 82 TOTAL PARKING SPACES**

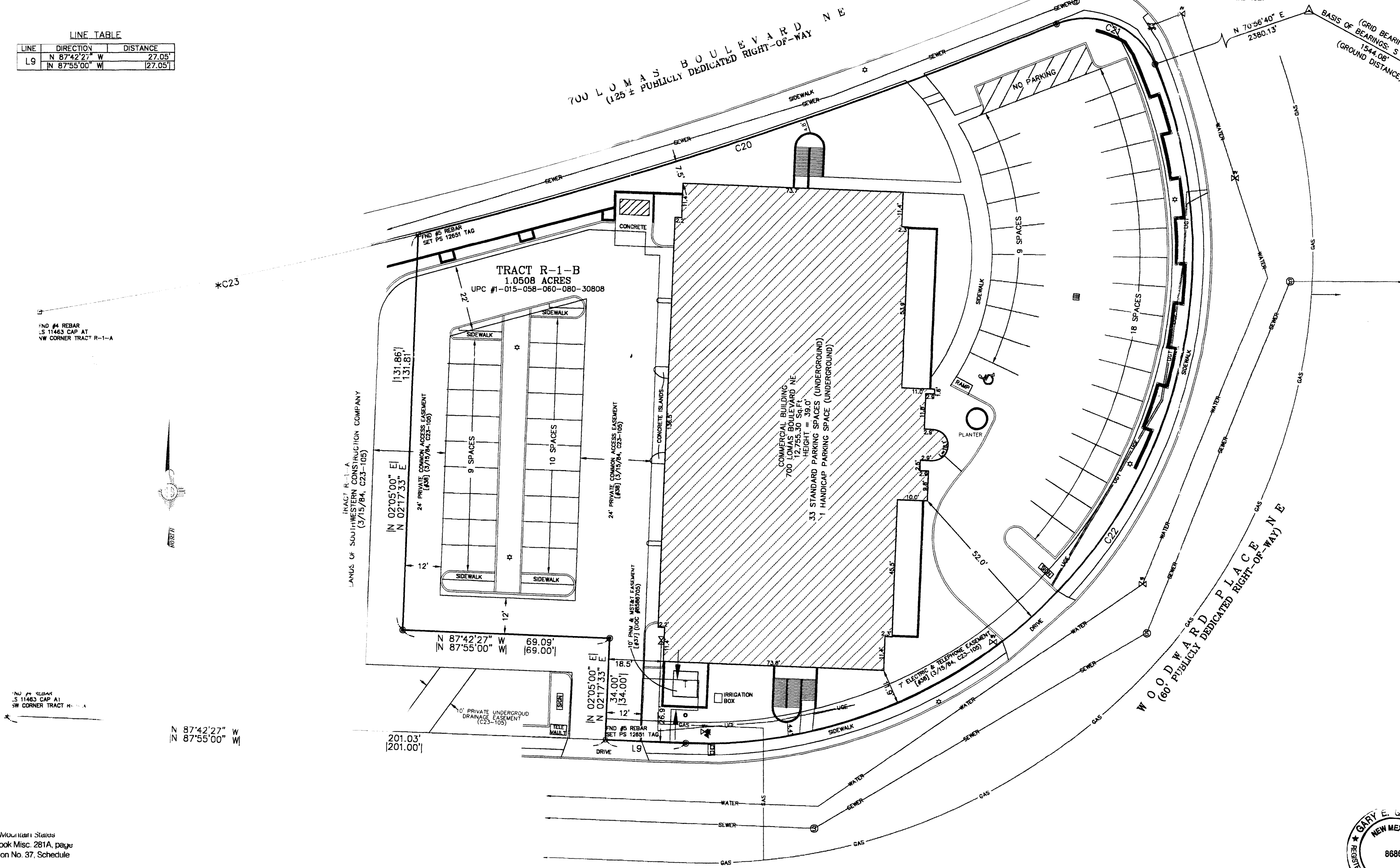


CURVE TABLE

CURVE	RADIUS	LENGTH	DELTA	TANGENT	CHORD BEARING	CHORD LENGTH
C20	1515.85'	225.05'	08°30'23"	112.73'	N 71°55'19" E	224.85'
C21	25.00'	39.10'	89°36'35"	24.83'	S 67°31'35" E	35.23'
C22	163.00'	327.20'	114°59'09"	255.93'	S 34°47'07" W	274.97'
*C23	1515.85'	129.78'	04°54'20"	64.93'	N 78°37'41" E	129.75'

LINE TABLE

LINE	DIRECTION	DISTANCE
LG	N 87°42'27" W	27.05'
	N 87°55'00" W	27.05'



STATION: 9-10 (ACS)
 X = 386,823.95
 Y = 1,488,959.09
 GROUND TO GRID = 0.99967130
 DELTA ALPHA = -0013'04"
 NEW MEXICO STATE PLANE
 COORDINATE SYSTEM
 CENTRAL ZONE
 NAD 1927

STATION: 9-10 (ACS)
 X = 387,977.80
 Y = 1,488,217.50
 GROUND TO GRID = 0.99967040
 DELTA ALPHA = -0012'55"
 NEW MEXICO STATE PLANE
 COORDINATE SYSTEM
 CENTRAL ZONE
 NAD 1927

As to Parcel IX
 1. Underground Easement granted to Public Service Company of New Mexico and Mountain States Telephone and Telegraph Company by instrument recorded October 16, 1985 in Book Misc. 281A, page 232 as Document No. 85-86705, records of Bernalillo County, New Mexico [Exception No. 37, Schedule B, Part II, shown on survey].
 2. Easements as shown and/or provided for on the plats recorded in Book C23, page 55 and in Book C23, page 105, records of Bernalillo County, New Mexico [Exception No. 38, Schedule B, Part II, shown on survey]

3/21/01
 Revised 5/22/01
 Revised 5/29/01
Greg E. Lintala



PROJECT NO. 9118-12
 DRAWN BY JG
 JUNE ATLAS: 4-15-2
 SANDIA.CRS

SURVEYS SOUTHWEST, LTD.
 333 LOMAS BLVD., N.E. ALBUQUERQUE, NEW MEXICO 87102
 PHONE: (505) 998-0303
 FAX: (505) 998-0306
SHEET 4 OF 4 T10N R3E SEC. 16