



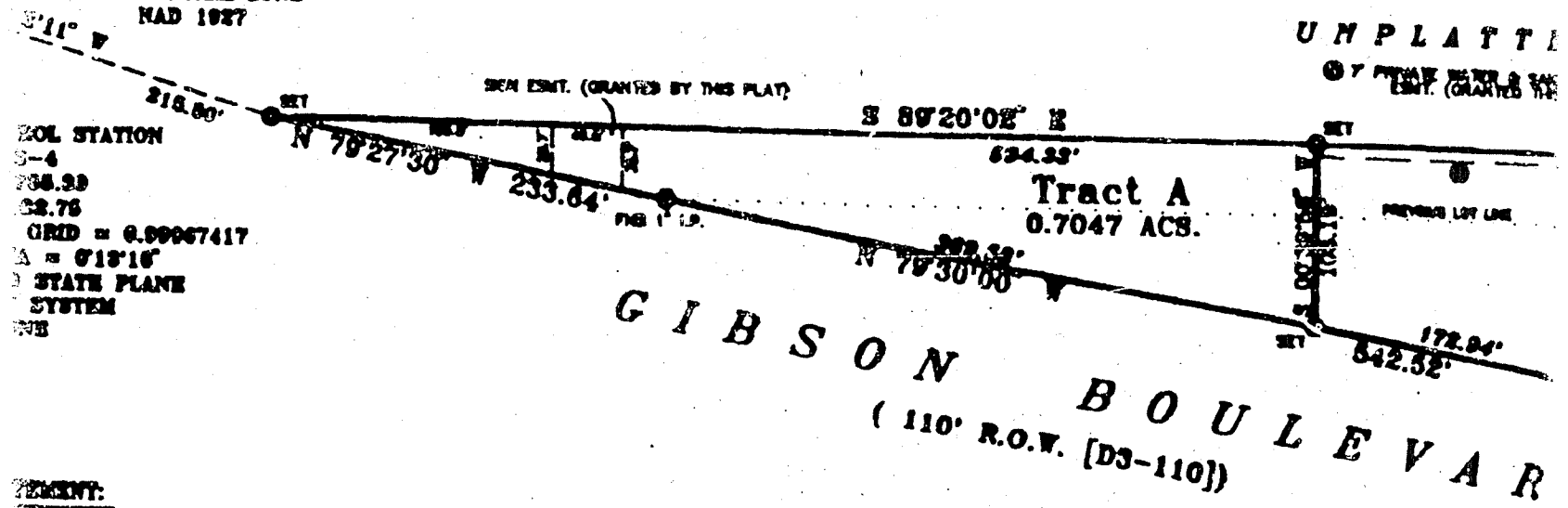
BDAY TOWN STATION
 X = 440,208.70
 Y = 1,533,471.33
 DELTA ALPHA = - 6°06'56"
 NEW MEXICO STATE PLANE
 COORDINATE SYSTEM
 CENTRAL ZONE
 NAD 1927

Δ = 95°07'00"
 B = 689.20'
 L = 97.71'

Δ = 95°07'00"
 B = 5870.00'
 L = 221.65' (221)

CHORD DATA
 S 04°17'10" E
 97.63'

CHORD DATA
 N 82°35'04" W
 221.83'



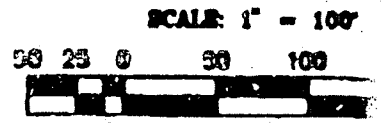
BOUNDARY STATION
 S-4
 208.30
 22.76
 GRID = 0.00067417
 Δ = 6°15'16"
 STATE PLANE
 SYSTEM
 NAD

COMMENT:

THIS REPLAY IS TO CREATE TWO (2) LOTS FROM
 TWO TRACTS OF LAND AND TO GRANT ADDITIONAL
 BROWN HERBON.

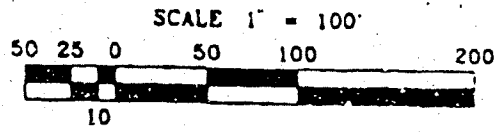
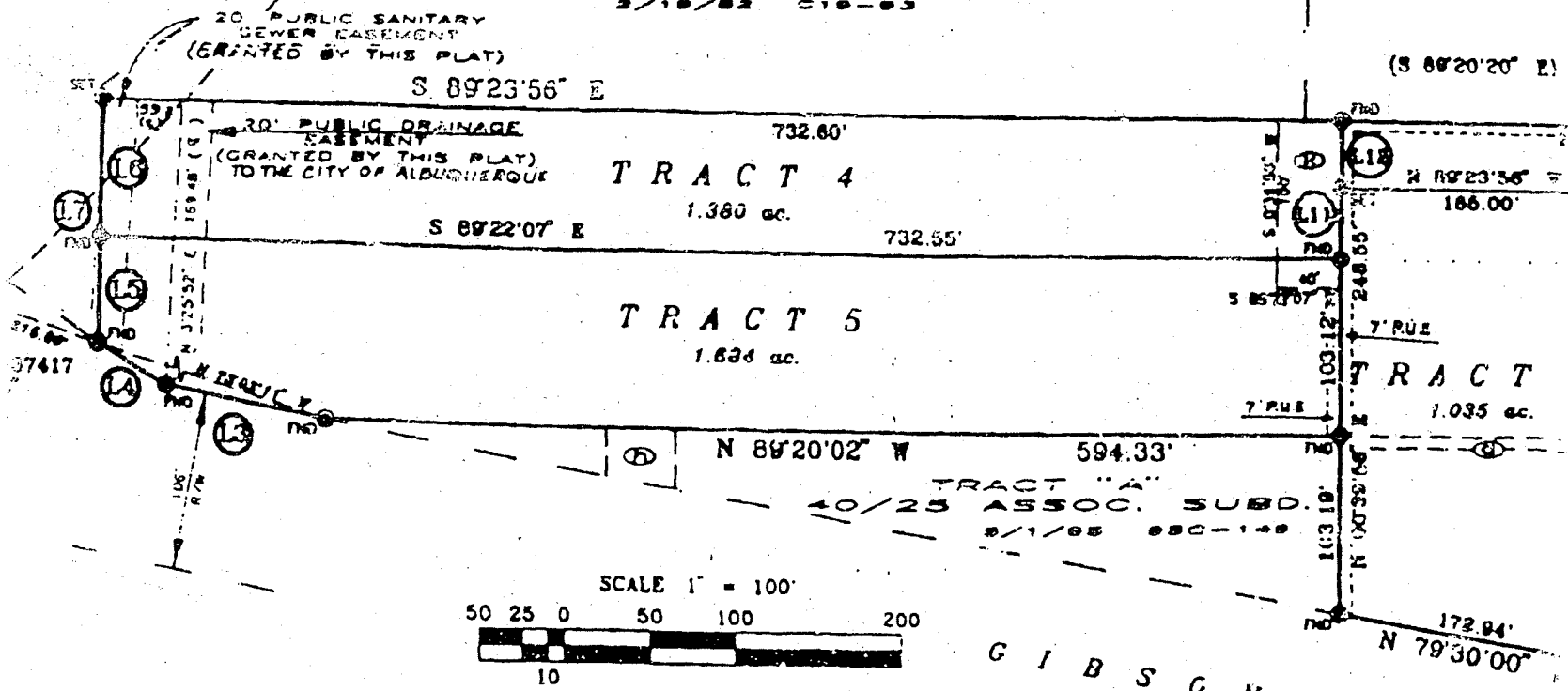
ACCESS FROM TRACT B TO GIBSON
 SAID RESTRICTION MAY BE ELIM.

THESE DATA ARE CORRECT & TRUE BY
 [Signature]
 229 025 00001



TRACT "B"
EVER READY SUBD.

2/19/82 C19-83



SUBDIVISION DATA / NOTES:

1. PLAT WAS COMPILED USING EXISTING RECORD DATA & ACTUAL FIELD SURVEY.
2. ALL CORNERS IDENTIFIED AS "SET" ARE A #4 REBAR W/ CAP STAMPED "LS 8446". UNLESS NOTED OTHERWISE
3. ALL CORNERS IDENTIFIED AS "EOT" ARE A #4 REBAR W/ CAP STAMPED

NOTE
PNM EASEMENT
Public Service