



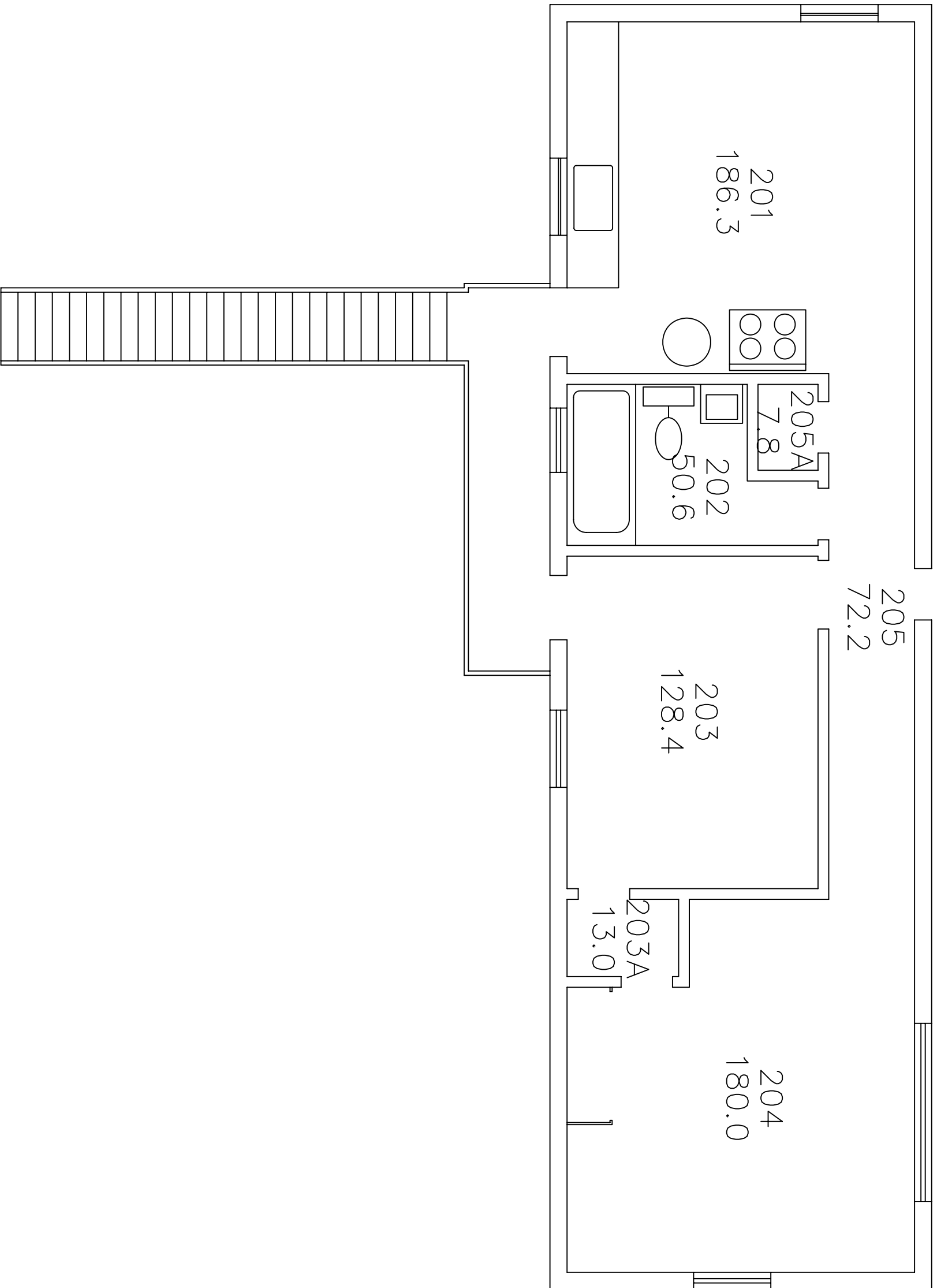
PLANNING & CAMPUS DEVELOPMENT
OFFICE OF SPACE MANAGEMENT

TOTAL FLOORS: 2 FLOOR: SECOND
TOTAL GROSS SQUARE FEET: 3,552 GROSS SQUARE FEET: ?



ARMY ROTC
SECOND FLOOR
1832, 1834, 1836 LOMAS BLVD NE

#175
2 OF 2
175-00-02



SECOND FLOOR
SCALE: NOT TO SCALE

