

THE MAP LEGEND

NMGIC Geographic Names Committee Involved in Three Name Change Proposals



Correcting a mistake in a long-established name is like removing roots from a water pipe: it can get messy.

That's the situation facing the NMGIC Geographic Names Committee as it confronts proposals to change three names that not only have long been in use but also are relatively well-known--and are attached to communities shown on the state highway map. The three are Turn in Valencia County, San Acacia in Socorro County, and Steins in Hidalgo County.

Early this year Ramon Baca from the small but growing community of Turn, located on NM 304 southeast of Belen, contacted the GNC, saying the community's original name, from as far back as the 18th century, was Casa Colorado, "red house," a name still used and preferred by the community's residents. "Turn," he said, "is a name no one uses or even knows."

The name Turn arose in the 1930s, when a man named Conant moved to the village and petitioned for a post office. He submitted three names to the postal authorities, and the one they chose was Turn, because the village was at a turn in the road. Since then, Mr. Conant and his post office have gone, but the name is still there.

So is San Acacia, 104 years after a post office was established with that name in the little community on the west bank of the Rio Grande north of Socorro. The establishment of the post office coincided with the arrival of the railroad here, and most likely someone--whether railroad official or postal official--was unaware that by misspelling the traditional name, San Acacio, with an "a" they were giving the male saint for which the community was named a gender change.

Ms. Lita Pino, a native of the community, said local residents have continued to use the original, more correct, Spanish, but other residents are reported to have accepted the misspelling, much in the same way the misspelling of Albuquerque (originally Alburquerque) has come to be accepted.

(Continued on page 3)

User Exhibits at the Fall NMGIC Meeting



The Fall NMGIC Meeting will be upon us before we know it, and as you probably are aware, the fall meeting is your opportunity to show the New Mexico GIS community what you've been doing. A great diversity of interesting GIS-related activities is in progress around the state, and the fall meeting is a great chance to learn about them; but we can't do it without your contribution. So, if you have a poster exhibit or an on-line, computer-based application or exhibit, plan on presenting it at the meeting. Corporate members are welcome to exhibit as well, but remember, the fall meeting is for the user. Corporate exhibits must focus on applications and cannot serve as advertising for products and services.

We are looking forward to seeing a wide range of exhibits at the fall meeting. Please contact Bill Baillargeon, GIS Committee Chairman, to make arrangements for an exhibit. Bill will need: (1) the title of your exhibit, (2) a brief abstract, and (3) a list of special needs such as power for a computer. See you at the fall meeting! (Meeting date to be announced.)

Bill Baillargeon
State of New Mexico
GSD/ISD
P. O. Drawer 26110
Santa Fe, NM 87502-0110

Telephone: 505 827-2047
Fax: 505 827-2325
Email: billb@gsd.state.nm.us

Inside This Issue

Native American Names Policies	page 2
GIS Data Standards	page 3
RGIS News	page 3
Job Board	page 4

From the President Amy Budge

I welcome this opportunity to serve as President of the New Mexico Geographic Information Council, and look forward to working with the Board in planning interesting and informative meetings and workshops. It is satisfying to have witnessed (and been a part of) the growth and maturity of NMGIC, from its grass-roots beginnings in 1984 to the respected, professional organization of 1995. The success of this organization is due to the dedication of those individuals who have served on the Board over the years, and to the support of its members. We have 191 regular members and 10 corporate members as we go to press with this issue of the *Map Legend*. Corporate profiles of some of our sponsors are also presented here.

Many thanks to Rich Friedman for a job well done as President of NMGIC for two years. NMGIC enjoyed a healthy growth under his leadership and I hope to continue this trend. Communication is vital to maintaining the energy of the Council and has been the backbone for furthering the goals and objectives of NMGIC. During the coming year, I hope to strengthen the role of communication not only through the *Map Legend* and our semi-annual meetings, but also by reaching out to our membership, sponsors, and potential members with the creation of a **Public Relations Coordinator**.

Communications between the Board of Directors and the NMGIC membership is highly encouraged. The 1995 NMGIC Board of Directors is dedicated to serving the membership. Each Board Member is responsible for specific functions of the Council. These individuals and their duties are: Amy Budge, President; John Peterson, Vice-president; Millie Eidson, Secretary; Hillary Armstrong, Treasurer; Bob Bewley, Meetings Coordinator; Rich Friedman, Workshop Coordinator; Stan Morain, Public Relations Coordinator; Jessie Rossbach, Elections Coordinator; and Bill Stone, Speakers' Coordinator. Please contact any of these people concerning Council business. Full mailing and email addresses, and phone and fax numbers are listed in every issue of the *Map Legend*.

One of the many strengths of NMGIC lies in the activities of its committees. Each of these committees has a charter and mission specific to its area of interest and responsibility. Committees meet independently as needed

(Continued on page 5)

Native American Names Policies

This spring, the U. S. Board on Geographic Names issued its most recent policies on Native American names (seven Native American languages are spoken in New Mexico). Also this spring, the USBGN released its policies regarding the use of diacritical marks in names appearing on maps. Previous policy had been to forbid the use of diacritical marks (including the possessive apostrophe in English), but Native American groups had protested this policy, saying it barred their names from appearing on maps as the alphabets of their languages often include diacriticals. Now, diacritical marks will be considered on a case-by-case basis if the diacriticals are part of a recognized orthography, such as exists for Navajo.

These policies aren't expected to have any immediate impact upon New Mexico, as no proposals are pending involving Native American names, but future proposals are likely, perhaps linked to the issue of tribal sovereignty.

An issue perhaps more imminent is the status of names Native American groups consider pejorative, and in other states, controversies already have erupted regarding Squaw. According to the GNIS CD-ROM, the U. S. has 1,010 features with Squaw in their names—and 13 of them are in New Mexico, including a summit in Sierra County named Squaw Tit (a name that occurs in seven other states). In Michigan, the legislature has approved a bill requiring that all Squaw names be changed, and a dust-up has arisen in Arizona regarding Squaw Peak, a major landmark in the Phoenix area.

As mentioned, no interest yet has been shown in New Mexico over this issue, but it's unlikely that a state that can debate cattle mutilations will be able to stay out of this for long.

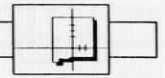
We Thought You'd Like to Know...

As we are all aware, the federal budget situation is rather bleak these days. On June 7 a bill was introduced into the U. S. House of Representatives calling for the abolishment of the Department of Commerce (DOC). As of June 15, the Department of Commerce Dismantling Act (aka Chrysler Bill or HR1756) had 60 cosponsors (1 Democrat and 59 Republicans) and had been referred to 11 committees for discussion. Many people involved in various disciplines have expressed concern about the ramifications if this bill becomes law.

This bill calls for some programs currently residing in DOC organizations to be transferred to other government departments, for some activities to be privatized, and for some programs to be completely terminated. DOC's National Oceanic and Atmospheric Administration (NOAA), which includes the National Weather Service, National Marine Fisheries Service, and nautical and aeronautical charting programs, receives rather rough treatment under the legislation.

NOAA's National Geodetic Survey is slated to survive the process by being transferred to the Department of Interior's U.S. Geological Survey. However, a 25% cut in funding (relative to FY94 level) and personnel is very likely. A cut of such magnitude will likely result in a "reduction in force" (aka layoff) of about 40 of the agency's 275 people. Various activities including the State

(Continued on page 4)



RGIS News

Twenty nine new coverages have recently been added to the Clearinghouse. These include eleven Albuquerque Metropolitan files courtesy of AGIS, eight Feature and Place Name files from the Geographic Names Information System (GNIS), and the Land Use Trend Analysis for the Albuquerque Basin database contributed by the U.S. Bureau of Reclamation. Subscribers to the *RGIS Catalog of Digital Geographic Data* have received updates to the catalog describing these new additions.

The RGIS metadata project is nearing completion with approximately 45 coverages complying with the FGDC Metadata Standard. The ARC/INFO 7.0.3 Document AML has been selected as the best medium for documentation. It has several advantages over other methods: when a coverage is developed, some of the processes automatically are documented within the Standard, and the metadata "travels" with the coverage. The goal by the close of the project in mid-September is to serve the metadata online.

The RGIS Program is providing support to New Mexico state and local governments for automating county mapping. Guidelines for automation have been drafted and are available to counties which have initiated, or are considering, an automation program. Automated mapping workshops are planned for local governments; the first is scheduled for late August.

Questions regarding the RGIS Program should be directed to Mike Inglis at EDAC. He can be reached at 505-277-3622 (voice), 505-277-3614 (fax), or edac@spock.unm.edu (email).

Three Name Change Proposals (Continued from page 1)

Like Baca, and also with the assistance of the GNC, Ms. Pino has submitted a formal name-change proposal to the U.S. Board on Geographic Names (USBGN). The GNC now will investigate public opinion and historical documents.

And finally, the USBGN forwarded a letter concerning a name that appears on several features in southwestern New Mexico, names with considerable historic significance. Since the days of the Butterfield Overland Mail, Steins (list features) have been important landmarks on the southern route west. Unfortunately, the features all were named for a U.S. Army major named Enoch Steen. And the letter-writer feels it's time the features recalling his ancestor reflect the correct spelling of his name. As of this writing, no formal name-change proposal has been submitted to the USBGN, though the letter-writer has been contacted and informed of the procedures involved.

By Bob Julyan, Chairman, Geographic Names Committee

GIS Standards for Large Scale Data

In New Mexico, a formally adopted standard exists only for GIS data sets created at scales of 1:24,000 and smaller. This small-scale standard provides rules regarding (1) data capture, (2) base data categories, (3) digital exchange formats, and (4) data element dictionaries. It also provides rules for the content and use of (1) a data quality report and (2) a source lineage report.

The existing small-scale standard applies to data for statewide and regional applications. Increasingly however, local and county governments, as well as others, are beginning to exploit the power of geographic information systems for automating parcel maps and land records and for similar local area activities. As a result of such developments, the need to develop and adopt formal large-scale digital mapping standards—those applying to scales larger than 1:24,000 (1 inch = 2,000 feet)—is evident.

The New Mexico Geographic Information Systems Advisory Council (GISAC) and the New Mexico Geographic Information Council (NMGIC) recently have taken steps toward developing just such a standard. At a June 5 meeting, a committee composed of representatives from the two groups was established and charged with drafting a large-scale standard for the State of New Mexico.

The Standards Committee hopes to provide the State with Land Information System (LIS) Standards that can be used by anyone who is involved in the creation of a LIS. The development and maintenance of digital geospatial data is an expensive process. Adherence to these standards will help to insure that an agency's investment in such a process is optimized and the data is useful to other departments or agencies. As currently envisioned, the large-scale standard will be composed of several elements necessary to constitute a complete, self-contained standard. These elements relate to (1) data capture and digitization, (2) geodetic control and positional accuracy, (3) data content and attribute standards, (4) cartographic guidelines, (5) metadata standards, and (6) data transfer standards.

In addition to the above areas, the Committee will include general information on products and tools that can assist the data developer in understanding and adhering to the standards. The target date for the completion of the LIS Standards is July 1996. In order for the large-scale standard to be effective and useful, the committee must draw upon the broadest possible range of resources while drafting the document. To contribute resources and information, or for further information on the committee, contact Erle Wright, Standards Subcommittee

(Continued on page 4)

JOB BOARD

Employment Wanted

My name is Kenneth Scott. I graduated from the University of New Mexico in December 1994. I majored in the Bachelor of University Studies with a strong background in GIS, satellite imagery, geography, and photography. I am looking for a job where I can use and expand these skills. I can be reached at 505 298-7349 or at 3532 Wyoming Boulevard NE, #103, Albuquerque, NM 87111.

GIS position sought by UNM graduate student. One year experience as GIS Analyst at Earth Data Analysis Center. Skilled in use of ARC/INFO including ArcView2, GRID, and AML. Have created variety of products of USFS, New Mexico Game and Fish Department, social agencies, and other clients. Will receive Master's Degree in Geography in Fall 1995. Has knowledge of water resources management, remote sensing, GPS, and biology. Position must be in Albuquerque area. Contact Noreen Breeding at 505 277-3622 (work) or 260-0820 (home)

My name is David J. McCraw. I have a B.S. and M.A. in Geography with a strong Geology minor concentration and over seven years contractual work experience in cartography (both manual and digital with some GIS), geologic mapping, geomorphic/pedologic site characterization, and analysis of spatial and temporal desert biotic interactions and distributions. I am seek meaningful employment in applied geoscience where I can apply my expertise in technical proposals, responsible field/lab investigation, research, digital graphics production, and project report presentations.

GIS Data Standards (Continued from page 3)

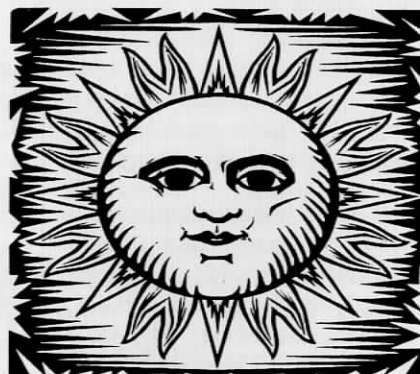
Chair, Bill Baillargeon, GISAC Chairperson, or other members of the committee. In addition, documents related to the committee's activities will be available on-line at the GISAC World Wide Web Resource.

Committee Members:

Bill Baillargeon, New Mexico General Services Department, 505 827-2047, billb@gsd.state.nm.us
 Amy Budge, University of New Mexico, Earth Data Analysis Center, 505 277-3622, abudge@spock.unm.edu
 Gar Clarke, City of Santa Fe, 505 984-6603
 Mike Ellett, Clint Sherrill and Associates, 505 256-7364
 Rich Friedman, McKinley County, 505 863-9517
 Shirley Lopez-Baros, University of New Mexico, Earth Data Analysis Center, 505 277-3622, sbaros@spock.unm.edu
 Rick Martinez, New Mexico Taxation and Revenue Department, 505 827-0892
 John Peterson, UNM, New Mexico Engineering Research Institute, 505 272-7295, jpeterson@triton.unm.edu
 Bill Stone, National Geodetic Survey, 505 768-3606, stone-ngs@cabq.gov
 A. Erle Wright, First Computer Concepts/Genius Loci, 505 843-9486

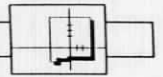
We Thought...(Continued from page 2)

Geodetic Advisor program, development of high accuracy reference network, modernization of air navigation, and the implementation of continuously operating GPS reference stations will likely be severely impacted or eliminated if the bill is passed. Stay tuned....



Guidelines for Counties

Implementation guidelines for large scale GIS standards will be available during Fall 1995. Contact the GIS Standards Subcommittee for more information.



1995 Corporate Sponsors



Corporate Profiles

A.C.T. GIS, Inc.
Great Plains USA Office
3160 Denton Avenue
Boulder, Colorado 80303-2136
303 786-7119

A.C.T. GIS, Inc., was formed in 1989 to provide an alternate choice for ARC/INFO™ consulting expertise. The rapidly evolving GIS industry of the past decade was accompanied by a decline in the quality of service by fast-growth firms, staffed by necessity with many new and unseasoned employees. This decline, prevalent throughout the industry, has resulted in many setbacks and failures of organizations implementing GIS technology. A.C.T. GIS *strives to provide clients with a better alternative through highly experienced professionals and competitive rates.*

A.C.T. GIS provides personal, consistent high quality, technically oriented, GIS consulting services. The firm consists of professionals who average 14 years of direct experience with ESRI's ARC/INFO software, the world's leading GIS software product. Our staff provides clients with a suite of GIS capabilities unparalleled in our discipline. We have worked at all levels of GIS implementation for local, state, regional, and federal government agencies and private sector firms around the world. Our experience spans all aspects of GIS technology including system and database design; database conversion; application design and development; training and mentoring; GIS hardware and software support and system administration; GIS software design and development; GIS demonstrations and benchmarks; and GIS project management.

The primary philosophies of A.C.T. GIS are to:

- Make GIS as simple as possible while focusing on end-user needs
- Develop high-quality, user-friendly ARC/INFO applications
- Educate our clients through our experiences with all aspects of GIS
- Perform services on-site as much as practical to promote synergy
- Provide GIS support to a client's existing job to boost efficiency
- Train users to be independent to make their GIS sites successful
- Provide high quality technical services at competitive rates

From the President (Continued from page 2)

throughout the year and are open to any interested NMGIC member. You are encouraged to participate in these committees and should contact the chair for information on the committee and for notification of scheduled meetings. The chairs and committees are also listed in every issue of the *Map Legend*.

A few changes have occurred regarding the NMGIC Committees. The **Public Awareness and Education Committee** has been dissolved for lack of a chair. The activities and responsibilities of the committee have been folded into the functions of the newly established **Public Relations Coordinator**. Two of the committees have new chairs. Bill Baillargeon (State of New Mexico, General Services Department) has agreed to take the lead for the **Geographic Information Systems Committee**. One of the current tasks of the committee is to participate in drafting a set of standards for large scale geospatial data. Other contributors to this task are the state GIS Advisory Council and RGIS. The new chair for the long-dormant **Local Government Land Records Committee** is Gar Clarke (City of Santa Fe). Bill Stone continues to serve as chair of the **GPS Committee**, though he is actively seeking a volunteer to take these reins because of the demands of his service on the Board. Please contact Bill or one of the Board members if you are interested, or can recommend a leader for this committee. Dave Love continues to chair the **State Mapping Advisory Committee**, and the **Geographic Names Committee** is in excellent hands under the leadership of Bob Julian.

I look forward to the coming year and hope to hear from you personally, through one of the committees, or via the *Map Legend*.



1995 Corporate Sponsors



Corporate Profiles

Autometric Incorporated
2500 Yale Boulevard SE
Albuquerque, New Mexico 87106
505 277-8202

From its founding in 1957 as a subsidiary of Paramount Pictures, Autometric, Inc., has become a market leader in providing information systems and services for reconnaissance and remote sensor imagery-related areas. With the creation of Vision International, Autometric, Inc., has become a leading international supplier of photogrammetric and geographic information system (GIS) software for the commercial sector. Today, as an employee-owned corporation, Autometric, Inc. draws upon a wealth of professional talent and technological resources.

The company offers a full range of commercial and custom products and information services in six related areas:

- Dynamic data visualization, graphics, and animation
- Advanced modeling and simulation systems
- Remote sensor image processing, interpretation, and analysis
- Photogrammetric and spatial data systems
- Decision support systems
- System engineering, development, and integration

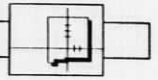
With headquarters in Alexandria, Virginia, offices across the nation, and distribution worldwide, Autometric, Inc., has enjoyed steady business growth and increasing financial success. The company has the unique position and credentials to design, develop integrate, and deliver solutions that can fully satisfy our customers' growing needs for geo-based information.

Autometric, Inc., develops mission-sensitive systems capable of taking complex data from satellites, aircraft, and other intelligence sources. We then put it all together in a way that visually portrays and accurately conveys a complete problem set—on land, on sea, in the air, in space.

Our geo-data imagery and spatial technology can be integrated with financial, marketing, research, and environmental data as part of a total decision support system. Autometric, Inc., imaging technology transforms static data sets into integrated, effective presentations that impart immediate understanding.

Autometric's full range of solutions allows you to bring the power and performance of advanced imaging technology to users at every level, from desktop PCs to high-end workstations. We offer user-friendly applications tools that enable you to edit, revise, access, manipulate, and display your data with a high degree of accuracy. We provide systems software tailored specifically to meet your needs. In addition, we bring advanced imagery capabilities to other GIS providers. Staying abreast of the requirements of these leading edge commercial companies provides vital guidance in our development of new technology.

With skills and services available to you across-the-board (including those of systems engineers, software developers, integrators, image scientists, operations analysts, trainers, artists, animators, and documentation specialists) Autometric, Inc., delivers the complete benefits of advanced imaging technology.



1995 Corporate Sponsors



Corporate Profiles

Environmental Systems Research Institute, Inc.
4875 Pearl East Circle, Suite 200
Boulder, Colorado 80301-6103
303 449-7779

Environmental Systems Research Institute, Inc. (ESRI), of Redlands, California, is the world leader in the rapidly expanding field of geographic information systems (GISs). Founded in 1969, ESRI pioneered the development and application of a number of products and services for organizations interested in mapping and geographic analysis. The company's early research and development in cartographic data structure and specialized GIS software tools, and the creative applications of these systems, galvanized the automated mapping industry. Thousands of organizations worldwide now use ESRI products and methods to manage their geographic information.

ESRI's products include ARC/INFO, a powerful, flexible GIS; ArcView, an affordable yet sophisticated desktop GIS and mapping tool; ArcCAD, software that links ARC/INFO with AutoCAD, the world's leading computer-aided design software from Autodesk, Inc.; and PC ARC/INFO, a full-featured GIS for PC compatibles.

ARC/INFO was the first database-oriented GIS developed in the world. It combines the cartographic capabilities of traditional computer mapping software with a strong analysis system built around a relational database management system (RDBMS). ARC/INFO completely changed digital cartography and the way professionals manage spatial information. ARC/INFO software has made it possible to better understand how data with a geographic component are interrelated by presenting the information in map form for visual analysis. It can be used to build custom maps and tables for specific applications. Because of the open architecture of ARC/INFO, spatial and non-spatial data can be integrated through user-defined interfaces.

ArcView was designed to be used by staff with varying levels of experience with GIS software, from the novice to the advanced user. It works directly with ARC/INFO, PC ARC/INFO, and ArcCAD databases as well as with your own databases. ESRI's ArcCAD software allows users to integrate their AutoCAD drawings into their GISs for data and mapping purposes. ESRI developed PC ARC/INFO for users who want a full GIS on a personal computer platform.

Thousands of organizations have chosen ESRI's software because it encompasses the leading ideas in technology for geographic information management. ARC/INFO is now the leading automated mapping and spatial DBMS in the industry. The latest study from industry analyst Daratech, Inc., of Cambridge, Massachusetts, reported that among major GIS vendors ESRI was the leading software provider with 28.1 percent of the market and estimated software revenues of more than \$160 million.

We at ESRI believe that better information makes for better decisions. Our reputation is built on contributing our technical knowledge, special people, and valuable experience to the collection, analysis, and communication of geographic information. Our design philosophy has been to create programs that are flexible, easy to use, well integrated, modular, highly portable, machine-independent, and well documented. This vision has led to the development of technically superior products that assure ESRI's customers a complete system for their needs.

Successfully implementing GIS technology requires more than hardware and software acquisition. ESRI fully supports you throughout the process of acquiring a GIS. We provide assistance from an initial needs assessment through system design and strategic planning, data standardization, data automation, system acquisition and integration, applications programming, education and training, and user support. ESRI's experienced and innovative professional staff perform these services using state-of-the-art technology.

Mark Taetz of ESRI's Denver regional office, is pleased to serve the needs of New Mexico by providing quality products, assistance, and training.

**1995 Corporate Sponsors****ALTEK Corporation**

12210 Plum Orchard Drive
Silver Spring, Maryland 20904-7802
Telephone: 301 572-2555
Fax: 301 572-2510

Bohannon Huston, Inc.

Courtyard 1
7500 Jefferson NE
Albuquerque, New Mexico 87109
Telephone: 505 823-1000
Fax: 505 821-0892

Chemrad

125 Lincoln Avenue
Santa Fe, New Mexico 87501
Telephone: 505 989-4143
Fax: 505 988-2746

Holman's, Inc.

401 Wyoming NE
Albuquerque, New Mexico 87123
Telephone: 505 265-7981
Fax: 505 268-5204

**Koogle & Pouls Engineering
Photogrammetric Engineers & Surveyors**

8338A Comanche NE
Albuquerque, New Mexico 87110
Telephone: 505 294-5051
Fax: 505 296-2672

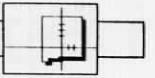
MRJ, Inc./GTAC

4400 Broadway, Suite 602
Tucson, Arizona 85711
Telephone: 520 326-7005
Fax: 520 322-9700

Transportation Associates, Inc.

AFC Building #2, Suite 160
2400 Louisiana NE
Albuquerque, New Mexico 87110
Telephone: 505 889-0971
Fax: 505 889-0531

NMGIC thanks these Corporate Sponsors for their 1995 support



New GNIS CD-ROM Available

An updated version of the Geographic Names Information System (GNIS) CD-ROM, containing data current as of February 1995, now is available.

GNIS is the ongoing effort by USGS to build a national database of named geographic features. The first phase of the project, completed in 1981, compiled all the names on the 7.5-minute USGS topographic maps; the second phase, which is still continuing, collects names from other sources, including maps produced by other agencies, historic names, and variants of names. Each record in the database includes not only the feature's name but also its latitude-longitude coordinates, the 7.5-minute USGS map the feature appears on, the state and county where it is located, and a bibliographic reference, as well as elevations for summits and populated places and other information.

The new version of the CD-ROM includes all data collected by Phase II through February 1995 and represents a significant expansion of the earlier data. In New Mexico, for example, the records included on the new CD-ROM total more than 56,000, more than double those collected during Phase I.

The CD-ROM costs \$57 and can be ordered from USGS by calling 1-800-USA-MAPS. For information about GNIS in New Mexico, contact Bob Julyan at the UNM Earth Data Analysis Center, 277-3622.

New Mexico County Quiz

So you think you know New Mexico? Sure, you may know how to take a GPS reading and how to create 150 different ArcInfo coverages, but when you're lost in a snowstorm at night driving back to Albuquerque from Las Cruces and your reading of your in-car GPS unit leads you to believe the next town down the road is Claunch, will the Holiday Inn there accept your Discover Card? Here's a little quiz about New Mexico counties designed to separate the real New Mexican geographers from the Texas tourists. Anyone scoring less than a five will be required to spend a semester at the Bruce King Institute of Advanced New Mexico Studies:

- 1 New Mexico has five counties named for U.S. Presidents--name them.
- 2 New Mexico has two counties named for saints--which saints?
- 3 Everyone knows Albuquerque is the county seat of Bernalillo County and Santa Fe that of Santa Fe County--but what about Rio Arriba County? San Juan County? Torrance County? Lea?
- 4 In what county would you find the following communities: Dora, Floyd, Elida, and Lingo?
- 5 New Mexico history includes two counties that either changed names or ceased to exist; name one of these inactive county names.
- 6 You are driving on I-40 from New Mexico's eastern border to its western border. Through which counties do you pass?
- 7 The name of Rio Arriba County, meaning "upper river," refers to a river--which river?

BONUS: Anyone able to explain in 25 words or less why Bernalillo is not the seat of Bernalillo County can skip the rest of the quiz.

ANSWERS: 1. Grant, Harding, Lincoln, McKinley, Roosevelt. 2. Saint Michael (San Miguel) and Saint John (San Juan). 3. Tierra Amarilla, Aztec, Estancia, Lovington. 4. Roosevelt. 5. Santa Ana (dissolved), Leonard Wood (changed back to Guadalupe). 6. Quay, Guadalupe, Torrance, Santa Fe, Bernalillo, Cibola, McKinley. 7. Rio Grande.

Compiled by Bob Julyan, geography maven and chair of the NMGIC Geographic Names Committee.

EOSAT Seminar

"Global Remote Sensing for Integrated GIS Applications"

September 26-27, 1995

Hyatt Regency - Denver, Colorado

EOSAT is presenting a two-day meeting that will show you the future of remote sensing today. Get experience with a variety of global satellite data sources designed to help you solve your problems. Talk to the leaders in the industry about the sensors of tomorrow, which will have spatial resolution of 1 to 5 meters. EOSAT promises to give you all of this, and more.

Day one will include carefully selected presentations by some of the most renowned and talented professionals in the industry. The agenda, list of speakers, and workshop providers are now being finalized. Exhibits featuring GIS and remote sensing products will be open during the entire seminar. Day two will be devoted to workshops designed to give knowledge of a variety of remote sensing data and GIS tools.

Registration fee is \$25 in advance and \$35 at the door. Registration fee includes exhibits, continental breakfast, lunch, and coffee breaks. For more information, call: Teri Ross at 216 642-1446 or Konrad Fry at 714 852-7370.

Calendar

Arizona's Second Annual GIS Conference, Scottsdale, Arizona, August 14-15, 1995. Contact: Arizona Geographic Information Council, 1616 West Adams Street, Phoenix, AZ 85007. Telephone: 602 542-4061.

SPOT: Plan It, Earth, 1995 SPOT User Group Meeting, Washington, DC, August 24-25, 1995. Contact: Corporate Communications Department, SPOT Image Corporation, 1897 Preston White Drive, Reston, VA 22091. Telephone: 703 715-3100. Fax: 703 648-1813. Email: INFO@SPOT.COM.

ION GPS 95, 8th International Technical Meeting, Palm Springs, California, September 12-15, 1995. Contact: The Institute of Navigation, 1800 Diagonal Road, Suite 480, Alexandria, VA 22314. Telephone: 703 683-7101. Fax: 703 683-7177.

GIS in the Rockies, Denver, Colorado, September 25-27, 1995. Contact: GIS in the Rockies, P. O. Box 280117, Lakewood, CO 80228-0117. Telephone: 303 932-2488.

ASPRS/NASA/USGS/NOAA: Land Satellite Information in the Next Decade. Sheraton Premiere at Tyson's Corner, Vienna, Virginia. September 25-28, 1995. Contact: Julie Hill at ASPRS, 5410 Grosvenor Lane, Suite 210, Bethesda, MD 20814-2160. Telephone: 301 493-0290. Fax: 301 493-0208.

Southwest ARC/INFO User Group Conference '95, Midway, Utah, October 15-18, 1995. Contact: SWAIUG, % Wasatch County, 25 North Main, Heber City, UT 84032-1827. Telephone: 801 654-3211 (Don Wood) or 801 379-6632 (Gwen Monette). Fax: 801 654-5116 (Don Wood) or 801 379-6417 (Gwen Monette).

Maximizing Your Profits with Satellite Imagery and GIS: One-Day Seminar for Managers and Decision Makers, Denver, Colorado, October 17, 1995. Contact: SPOT Image Corporation, 1897 Preston White Drive, Reston, VA 22091-4368. Telephone: 703 715-3100. Fax: 703 648-1813.

Rural Economic Development Forum, Ruidoso, New Mexico, October 18-20, 1995. Contact: NMSBDC, Attention: Carla Neeley, P. O. Box 4187, Santa Fe, NM 87502-4187. Telephone: 505 438-1362.

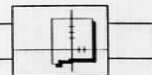
GIS/LIS '95, Annual Conference and Exposition, Nashville, Tennessee, November 12-16, 1995. Contact: GIS/LIS '95, 5410 Grosvenor Lane, Suite 100, Bethesda, MD 20814-2122

Applied Geologic Remote Sensing, 11th Thematic Conference and Workshops, Las Vegas, Nevada, February 27-29, 1996. Contact: ERIM, P. O. Box 134001, Ann Arbor, MI 48113-4001. Telephone: 313 994-1200 extension 3234. Fax: 313 994-5123. Internet: wallman@erim.org.

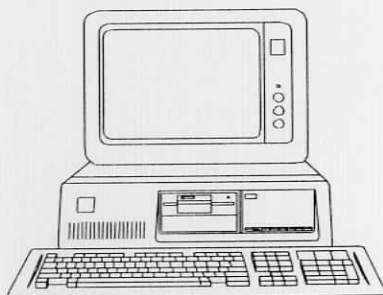
If you would like your meeting, conference, or workshop announcement printed here, please send it to: *The Map Legend*, % Stan Morain, Earth Data Analysis Center, 2500 Yale Boulevard SE, University of New Mexico, Albuquerque, NM 87131-6031



The Map Legend is completing its sixth year of publication with this issue. Getting this newsletter to you is a cooperative effort in the best spirit of the NMGIC. It takes an enormous amount of coordination, cooperation, and generosity from the many people willing to give their time, talents, and energy outside their normal jobs and normal working hours to bring you this newsletter. We especially appreciate all the members who send or write articles. All members are asked to keep *The Map Legend* in mind if you have news items or pertinent articles you would like to see published. Also, if you have any suggestions on what kinds of workshops you would like NMGIC to sponsor in the future, send them to *The Map Legend* % Stan Morain, Earth Data Analysis Center, 2500 Yale Boulevard SE, University of New Mexico, Albuquerque, NM 87131-6031 or email to Stan at edac@spock.unm.edu.



THE MAP LEGEND



Editor: Jeanette Albany
Assembly: Amy Budge

The Map Legend is published quarterly by the New Mexico Geographic Information Council and is a benefit of membership in NMGIC. The opinions expressed are those of the contributors and do not necessarily represent the views of the New Mexico Geographic Information Council, except where specifically noted. The mention of trade names or products does not constitute an endorsement by the NMGIC. **Members are invited to send articles and announcements of interest to the editor by the following deadlines: September 1, December 1, March 1, and June 1.** Please direct all correspondence to:

Jeanette Albany
% Earth Data Analysis Center
2500 Yale Boulevard SE, Suite 100
University of New Mexico
Albuquerque, NM 87131-6031

Fax: 505 277-3614
Email: tacmail@hydra.unm.edu

NMGIC Board of Directors

Amy Budge, President
Earth Data Analysis Center
2500 Yale Boulevard SE, Suite 100
University of New Mexico
Albuquerque, NM 87131-6031
Telephone: 505 277-3622
Fax: 505 277-3614
Email: abudge@spock.unm.edu

John Peterson, Vice President
UNM/NMERI
901 University SE
Albuquerque, NM 87106
Telephone: 505 272-7295
Fax: 505 272-7355
Email: jpeterso@triton.unm.edu

Millie Eidson, Secretary
New Mexico Department of Health
Office of Epidemiology
P. O. Box 26110
Santa Fe, NM 87502-0013
Telephone: 505 827-0006
Fax: 505 827-0013
Email: eids101w@wonder.em.cdc.gov

Hillary Armstrong, Treasurer
Sandia National Labs
MS 0718
Albuquerque, NM 87185-0718
Telephone: 505 845-9571
Fax: 505 844-0244
Email: hillarym@ttd.sandia.gov

Bob Bewley, Meetings Coordinator
Bureau of Land Management
P. O. Box 27115
Santa Fe, NM 87502
Telephone: 505 438-7481
Fax: 505 438-7843
Email: bbewley@158.68.161.70

Rich Friedman, Workshop Coordinator
McKinley County GIS Center
P. O. Box 70
Gallup, NM 87305
Telephone: 505 863-9517
Fax: 505 863-6362

Stan Morain, Public Relations
Earth Data Analysis Center
2500 Yale Boulevard SE, Suite 100
University of New Mexico
Albuquerque, NM 87131-6031
Telephone: 505 277-4000
Fax: 505 277-3614
Email: edac@spock.unm.edu

Jessie Rossbach, Elections Coordinator
Natural Resources Conservation Service
6200 Jefferson NE
Albuquerque, NM 87109
Telephone: 505 761-4437
Fax: 505 761-4462

Bill Stone, Speakers Coordinator
National Geodetic Survey
% Albuquerque Public Works/Survey Section
400 Marquette NW, Room 401
Albuquerque, NM 87102
Telephone: 505 768-3606
Fax: 505 768-3629
Email: stone-ngs@cabq.gov

NMGIC Committees

Geographic Names Committee
Bob Julyan, Chair

Earth Data Analysis Center
2500 Yale Boulevard SE, Suite 100
University of New Mexico
Albuquerque, NM 87131-6031
Telephone: 505 277-3622
Fax: 505 277-3614
Email: edac@spock.unm.edu

GIS Committee
Bill Baillargeon, Chair

State of New Mexico
GSD/ISD
P. O. Drawer 26110
Santa Fe, NM 87502-0110
Telephone: 505 827-2047
Fax: 505 827-2325
Email: billb@gsd.state.nm.us

Global Positioning Systems Committee
Bill Stone, Chair

National Geodetic Survey
% Albuquerque Public Works/Survey Section
400 Marquette NW, Room 401
Albuquerque, NM 87102
Telephone: 505 768-3606
Fax: 505 768-3629
Email: stone-ngs@cabq.gov

Local Government Land Records Committee
Gar Clarke, Chair

City of Santa Fe
P. O. Box 909
Santa Fe, NM 87504-0909
Telephone: 505 984-6603
Fax: 505 986-6910

State Mapping Advisory Committee
Dave Love, Chair

New Mexico Bureau of Mines and
Mineral Resources
Campus Station
Socorro, NM 87801
Telephone: 505 835-5146
Fax: 505 835-6333
Email: dave@gis.nmt.edu